

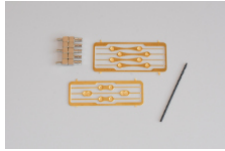
## BICYCLE BOXED SET KIT

This set comes with all track components\* for a circuit with two bicycles including both a male and female cyclist plus track magnets. Motor is set to medium speed.



## SLIDER BOXED SET KIT

This set comes with all track components\* and enables you to create a layout using your own vehicles or boats.



Motor is set to fast speed

Set Includes: 8 vehicle sliders for H0, TT, N, Z.

38 various scale magnets

Drill Bit (to help you with the attaching of sliders to your vehicles)

## BOAT BOXED SET KIT

This set comes with all track components\* Includes two boats and magnets suitable for HO & N scale. Motor is set to slow speed and a small piece of velour cloth for bottom of boats to reduce friction. Can be used with barges and slow moving boats.



## \*Track Components

Boxed set kits come with track components to make up to 225cm of track and includes:-



- ❖ 2 return loops
- ❖ flexible guide rails
- ❖ drive-module
- ❖ 12V DC motor set at fast, medium or slow speeds - all can be controlled with 12v Magnorail controller or your own train controllers



For the full range of Magnorail Kits and Accessories visit our website at [WWW.MAGNORAILOZ.COM.AU](http://WWW.MAGNORAILOZ.COM.AU)

## READY TO RUN

The Magnorail Ready to Run bicycles are hand assembled and painted by the Magnorail inventor Loek Bronkhurst on behalf of Magnorail.

The range includes: Lady on Bicycle, Man on Bicycle, Couple on Tandem, Man on Sports Bike (2 Styles), Santa with Christmas Tree Trailer, Ice Cream Vendor, Man on Cargo Bike, Postman, Policeman, Factory Worker with more to come!



[WWW.MAGNORAILOZ.COM.AU](http://WWW.MAGNORAILOZ.COM.AU)

Email: [magnorailoz@gmail.com](mailto:magnorailoz@gmail.com)  
PO Box 789 Stawell Vic 3380

## DISCLAIMER

Please note MagnorailOz is an Australian reseller of Magnorail products and has no legal ties with Magnorail France in any corporate respect but are bound to Australian Consumer Laws for any faulty goods supplied by us. We do not act on behalf of Magnorail France in any respect to warranties, account or delivery disputes or repairs on purchases made through websites other than [magnorailoz.com.au](http://magnorailoz.com.au)



FOR PEOPLE  
WANTING A  
LITTLE  
MAGIC  
ON THEIR LAYOUT



Use our starter kits, with pedalling cyclists, boats or vehicles of your choice to create your own diorama or layout with -



# THE FUTURE IS MAGNORAIL

## Frequently Asked Questions

### What scales can the Magnorail System operate in?

As the drive power is under your roadbed you can place any of your own vehicles in the following gauges: TT, Z, N and HO with magnets supplied in the Boxed Slider Starter Kit.

### Are the bicycles available in all scales?

No. The kits and Ready to Run (RTR) bicycles are only available in HO Scale.

### Do the Ready To Run Bicycles come in starter kits?

No, the RTR series are only available as separate items.

### Can I buy cyclist kits separately?

No, only the 2 riders set (M&F) are available in kit form.

### Can I fit the Magnorail System to my existing layout?

Generally it is difficult to retrofit the Magnorail System as the drive mechanism needs to be embedded under your layout's roadbed. However with a bit of creative thinking, systems have been added to the inside of a layout.

- ❖ By way of a single track in front of the back board, then exit behind some scenery, run along the inside of your back board and reappear further along from behind a structure or bush.
- ❖ Add an extension to the front of your layout with a small return loop.
- ❖ Add a pond or lake in a "dead" section with pedal boats, ski boats, swans or rowboats.

Check out our YouTube Channel and view the hundreds of Magnorail layout configurations for ideas: <https://www.youtube.com/user/klatchco56>

### Can boats run in real water?

As the motive power is under the sea/lake bed, yes you can run boats on a properly sealed lake or river with a film of water you just need the magnets to be inside the boat or waterproofed.

### Can any vehicle be used with the Magnorail System?

Within reason, sliders can be fixed to most wheeled scale models or magnets can be glued directly to the chassis.

Once again you can be creative as to how you attach magnets - check out the videos.

The *MAGNORAIL SYSTEM* was invented and developed in the Netherlands in 2012 by a group of hobbyist engineers looking for that unique *special something* to bring to a model layout and make it available across a range of hobby scales from Z to O.

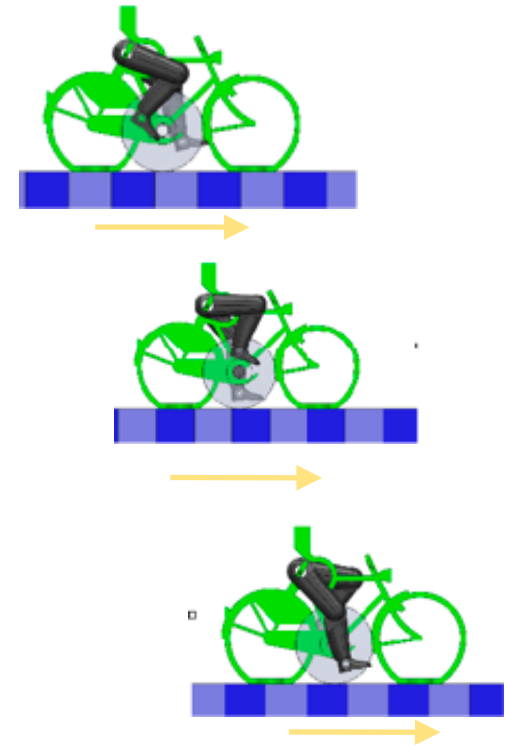
Already aware of the Faller Car System with self-propelled cars and trucks, they concentrated on bicycles, the most common form of transport in the Netherlands. For the full story go to this link on our website. [https://www.magnorailoz.com.au/uploads/1/1/5/6/115689279/magnorail\\_story\\_.pdf](https://www.magnorailoz.com.au/uploads/1/1/5/6/115689279/magnorail_story_.pdf)

## HOW DOES IT WORK?

The *MAGNORAIL SYSTEM* employs a finely engineered plastic channel and an interlocking chain system embedded with *rare earth* magnets.

The magnets can be placed in various sequences (of your choice) for a range of effects and spacing of the bicycles or vehicles, as they run across your road or water surface.

The chain flows through a drive section that presses on the side of the links and is powered by a 12 Volt DC motor. Vehicles seemingly roll unaided across the road and boats, jet skis or yachts skim across the water surface of your layout. The combination of the moving chain under the roadbed with embedded magnets pulling the bike along, allows the clear centre bicycle wheel to interface with the road surface giving the illusion (*MAGIC*) of riders pedalling their bikes!



**ALL BICYCLES  
REALISTICALLY PEDAL**



**You can move O, OO,  
HO, N & Z scale!**



**Die cast or plastic  
vehicles**



**You can move  
speedboats, yachts or  
canoes &  
sailboards**

